

6MP Smart AI 120M Dual Light, 7" Speed Dome PTZ, PoE
IP Camera with Built in MIC/Speaker, SD Slot, 20x Zoom, Auto Tracking

AirCam SDDL-6120XAI-20X7



6MP 3072x2048	4.7-94 mm Motorized AutoFocus	120M IR 40~50M Light	Mic/Speaker Built-in	Smart AI Function	48V PoE
H.265 H.264	20x Optical Zoom	Smart Auto Tracking	Pan 0° ~ 360° Tilt -5° ~ 90°	SD Card Slot	IP66 Waterproof

Overview

Experience superior surveillance with our 6MP Autofocus AI Dual Light 120M 7" Speed Dome PoE IP Camera, The AirCam SDDL-6120XAI-20X7 -a state-of-the-art Smart AI surveillance solution. Achieve crystal-clear image quality with its Sony CMOS sensor technology and Autofocus technology. Benefit from powerful 50-meter Dual Light vision and 20x Optical zoom, ensuring comprehensive coverage day and night. The smart Dual Light technology will save on large recording files but still offer full color images when motion is detected. Full color image during the day and IR images (up to 120m) during the night, when human/vehicle is detected the built in Light LED will turn on and full color images will be recorded of the human/vehicle that is detected. Smart AI functions; the Aircam offers many extra AI features including: Human Body & Vehicle Detection, Cross Line, Area Intrusion, Enter/Leave Area and Face Detection. The Speed dome also offers Smart Auto Tracking, Which can do Human Detection Tracking together with the Patrol function, Featuring Pan-Tilt-Zoom (PTZ) functionality. The camera also comes with a Built-in Mic and Speaker to worth of intruders.

Enjoy easy installation via Power over Ethernet (PoE) for hassle-free setup and monitoring.
Capture essential details effortlessly with this advanced IP camera, ensuring your security needs are met effectively.

Features

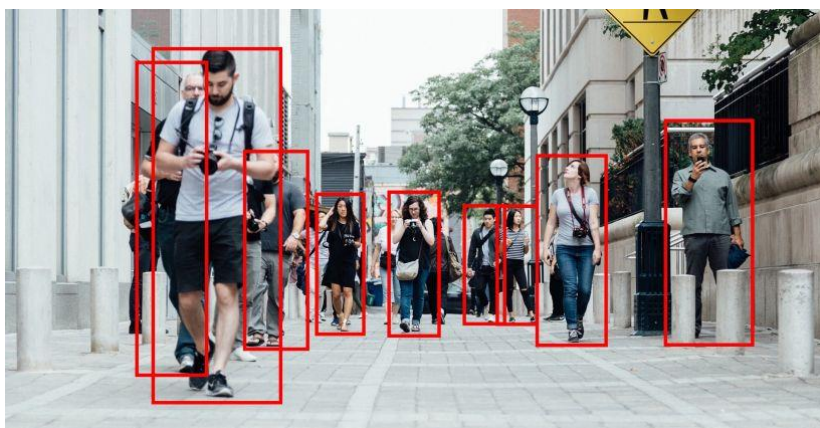
- High-Quality Imaging: Equipped with a 1/2.8" Sony CMOS sensor, delivering sharp 6MP HD resolution (3072 x 2048) output.
- Smart Dual Light, Pure Infrared, Pure White Light
- 20x Optical zoom.
- Smart Tracking: Human Detection Tracking
- Comprehensive Image Control: Features such as Day/Night, AWB/MWB, 2D/3D-DNR, Shutter, and IR-CUT for optimal image quality.
- Image Enhancement: WDR, Mirror, Rotate, and Defogging functions to improve image clarity.
- Customizable Overlays: Supports multiple Style OSD overlays, Motion Detection, and Privacy Mask for tailored surveillance.
- Compatibility: RTSP and Onvif 23.12 compatibility for integration with various third-party NVRs.
- Efficient Encoding: H.264/H.265 dual-stream media server for efficient video encoding.
- P2P Cloud Service: Easy-to-use P2P Cloud service for remote access.*(Using ANVR)
- Security Features: User authentication and video data encryption for enhanced data protection.
- Alarm Handling: Supports Alarm Snapshot to Email and FTP for immediate event notifications.
- Versatile Access: Multiple access options including various web browsers, PC client, and mobile app for remote monitoring.*(app via ANVR)
- IEEE802.3af PoE support for convenient installation.
- Lightning Protection: Equipped with 4000V lightning protection for added durability.
- Weatherproof Design: Robust IP66-rated housing for strong water-proofing.
- Powerful IR and Light Illumination: Features 6pcs Dual Light LEDs & 4pcs Laser IR LEDs up to 120(IR), 50(Light)-meter distance.
- Motorized Lens: 4.7-94mm Motorized lens for flexible focal adjustments.
- Pan/Tilt Range: Pan: 0° ~ 360°; Tilt: -5° ~ 90°
- Alarm function: Digital Alarm in/out, Audio in/out
- MicroSD card supported, for local recording.
- Built-in Mic and Speaker.

IP Camera Smart AI feature - Smart Human/vehicle detection

Elevate your security with our AI-powered IP camera featuring advanced human and vehicle detection. This intelligent technology ensures accurate alerts, reducing false alarms. With precise identification, it enhances surveillance efficiency, making it ideal for safeguarding your premises. Stay one step ahead with smart, automated security.

Smart AI –Human Detection

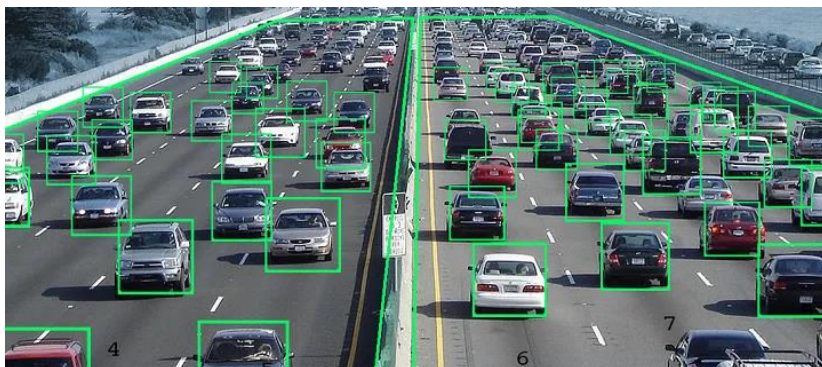
It uses advanced artificial intelligence and computer vision to identify and detect people in various scenarios, such as security, surveillance, retail, and entertainment.



Smart AI Vehicle Detection for Car and other vehicles

It's mainly to identify and detect vehicles in various scenarios, such as traffic management, parking, toll collection, and security.

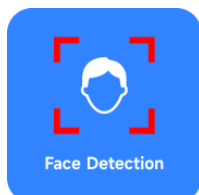
Smart AI aims to provide accurate, reliable, and efficient solutions for vehicle detection needs.



The AirLive Smart AI extra functions.

Next to the Human and Vehicle detection the camera also supports **Face, Line Crossing, Area Entry/Leaving Detection, Area Intrusion Detection.**

These AI Intelligent Detection functions for selected Detect targets, making it able to detect different targets and to keep track of selected areas the camera is focused on. Track who is coming inside the building with the Face detection or use the Line Crossing detection for extra security when people should not cross a line like on the loading dock or transportation platform. Use the Area Leaving/Entry and Intrusion detection functions. To keep a warehouse area secure or to keep track on selected outdoor area. Thus, giving you a more secure and smart security solution.



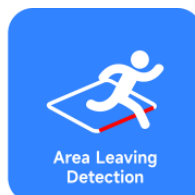
Face Detection



Human body &
Vehicle detection



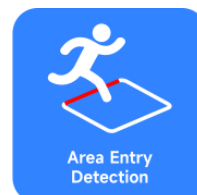
Line Crossing
Detection



Area Leaving
Detection



Area Intrusion
Detection



Area Entry
Detection

Smart Dual Light

The AirCam SDDL-6120XAI-20X7 is equipped with both IR and Warm Light LEDs. This feature makes that the camera can work in three different modes. Smart Dual Light, Pure Infrared Light and Pure White Light.

Some of the advantages of Smart Dual Light are:

Flexible Illumination Modes: These camera can switch between infrared (IR) mode for low-light environments and warm light mode for full-color video footage. This adaptability ensures optimal visibility in varying lighting conditions.

Reduced Light Pollution: The IR mode minimizes light pollution, making it ideal for residential areas or places where minimal light is preferred.

Enhanced Security: The warm light mode provides detailed color video, which is crucial for identifying details like clothing or vehicle colors. As shown in the example below.

Smart Detection: Equipped with advanced algorithms, the camera focus on human and vehicle targets, reducing false alarms triggered by irrelevant objects.

Remote Management: Users can control the camera's illumination remotely via mobile apps, offering convenience and adaptability.

Reduced NVR recording space: When video footage is recorded to the NVR 24/7, full color footage would require more storage space. With the Smart Dual Light function only the Human or Vehicle will be in full color, and all other footage in Infrared. Thus, saving on nighttime full color 24/7 recording space.

How does Smart Dual Light function:



IR LED ON

In the absence of a vehicle or person, the camera uses only IR light.



White LED ON

When a **Vehicle or Human Body** is detected, white light is automatically triggered on, resulting in color imaging and video with clear details.



IR LED ON

Once the vehicle or human leaves, the cameras switch back to IR light automatically.

6MP Smart AI 120M Dual Light, 7" Speed Dome PTZ, PoE

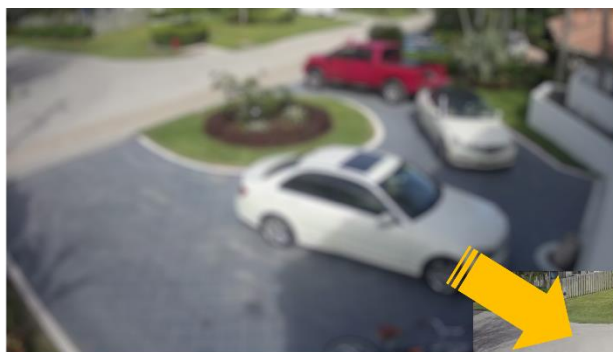
IP Camera with Built in MIC/Speaker, SD Slot, 20x Zoom, Auto Tracking

AirCam SDDL-6120XAI-20X7

airlive®

4.7-94 mm Motorized Auto focus lens, 20x Optical Zoom

The AirCam SDDL-6120XAI-20X7 is equipped with a versatile 4.7-94mm motorized autofocus lens. This feature ensures precise focus adjustments, allowing for sharp and clear imagery without manual intervention. Enjoy effortless control over your surveillance, capturing every detail with ease and accuracy. Zoom in onto points of interest with the 20x Optical zoom.



Auto Focus Lens

Get a sharp clear image



20x
Optical Zoom



PTZ and Smart Auto Tracking

The AirCam SDDL-6120XAI-20X7 is a smart Speed Dome PTZ camera that can pan, tilt, and zoom automatically or remotely to capture different angles and details of a scene. PTZ control is done via the Webui of the camera (UTC), the PTZ function can also be controlled via the APP and the ANVR. The Smart PTZ camera can be used for streaming, web conferencing, broadcasting, security, and surveillance purposes. The Speed Dome Camera offers the ability to fast and precisely rotate on a 360° pan and 90° tilt to survey a wide range of territory. The user can easily set up to 255 preset positions and up to 8 patrol routes and maximum 16 presets in group.

Smart Auto Tracking, The camera will do Human Detection Tracking together with patrol the patrol function. It can track the object after target detection and selection to ensure that the object maintains a fixed proportion for superb tracking views by automatically controlling the direction.

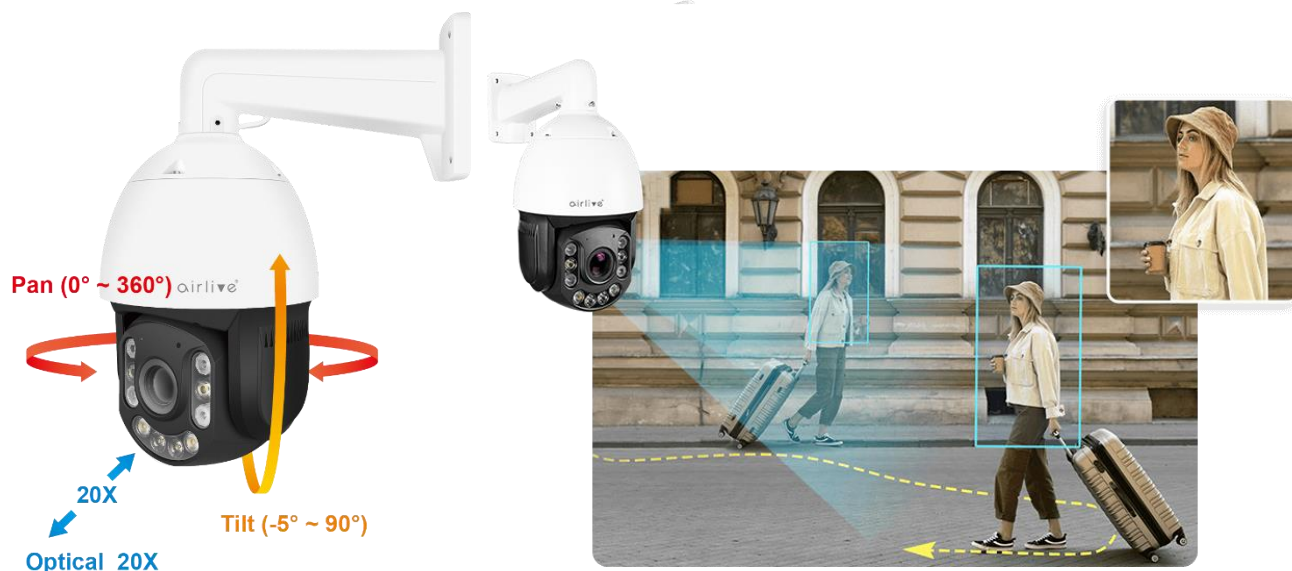
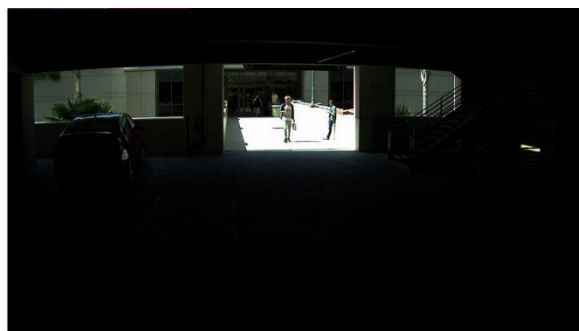


Image Enhancement: WDR, Mirror, Rotate, and Defogging functions

The AirCam SDDL-6120XAI-20X7 takes image enhancement seriously, offering a suite of advanced features. Wide Dynamic Range (WDR) balances exposure, ensuring well-lit scenes in challenging lighting conditions. Additionally, it provides the ability to mirror and rotate images as needed, enhancing flexibility in surveillance placement. Furthermore, the integrated Defogging function improves visibility in misty or foggy environments, ensuring that you get clear, detailed footage regardless of adverse weather conditions. These features collectively enhance the camera's performance and its suitability for various monitoring scenarios.



WDR OFF



WDR ON

6MP Smart AI 120M Dual Light, 7" Speed Dome PTZ, PoE

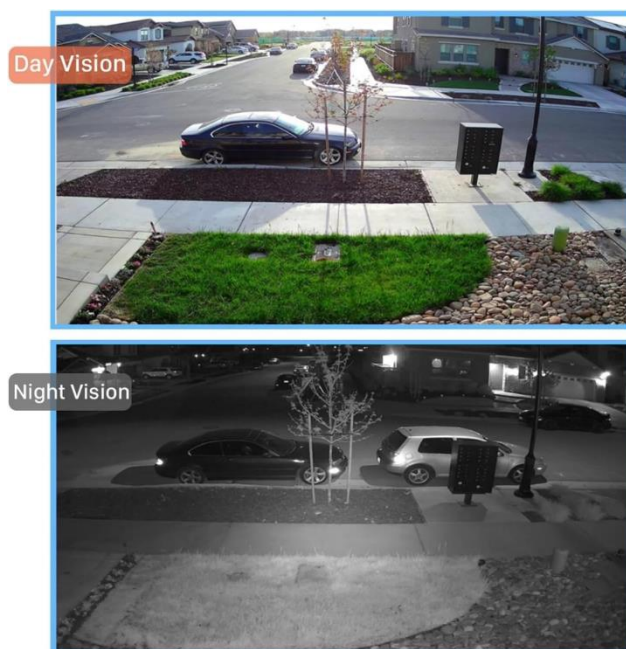
IP Camera with Built in MIC/Speaker, SD Slot, 20x Zoom, Auto Tracking

AirCam SDDL-6120XAI-20X7

airlive®

AirCam SDDL-6120XAI-20X7 IR Laser LEDs with a 120-meter IR distance

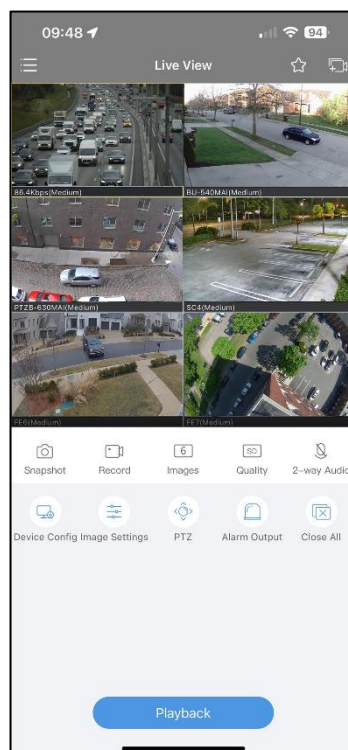
The AirCam SDDL-6120XAI-20X7 is equipped with LEDs, delivering powerful infrared illumination. With an impressive up to 120-meter IR distance, it ensures exceptional night vision capabilities, providing clear and detailed surveillance footage even in complete darkness. Whether it's monitoring large outdoor areas or dimly lit spaces, this camera guarantees reliable 24/7 security coverage, making it a robust choice for various applications. This is when the Dual Light and White Light are not used.



IP Camera Android/iOS App Support App Via AirLive ANVR

Our IP Camera boasts Android and iOS app support, providing convenient access to your surveillance system. To use remote viewing via the APP, the camera must be connected to an AirLive ANVR NVR. Without the ANVR the APP will not work.

The user-friendly app, "Guard Viewer" allows you to effortlessly search and view video feeds. Stay connected and in control, monitoring your property from your mobile device with ease and convenience. Live view your camera feeds remotely, configure camera settings on-the-go, and manage PTZ (Pan-Tilt-Zoom) functionality with ease (when supported by the camera). Empower yourself with the flexibility to monitor and adjust your surveillance system from anywhere.



Model	AirCam SDDL-6120XAI-20X7
Interface <ul style="list-style-type: none">• Network Interface: PoE 802.3af 1x RJ45 10M/100M• Media: Webui, AirCam64 II, Android, iOS• Onvif: 23.12 compatible (profile S G T M)• Standard: HTTP(s)/RTSP/FTP/SMTP/DHCP/NTP/DST/RTP/RTMP/P2P /HiK/IPv4/IPv6/NFS	LED <ul style="list-style-type: none">• Light: 6pcs Dual Light LED & 4pcs IR Laser LED,• Light Distance: 40~50m• IR Range: 120~150m Lens <ul style="list-style-type: none">• Lens Focal length: 4.7-94 mm Motorized Lens• Zoom: 20x Optical Zoom, Support Auto Tracking• FOV: 1/2.8 55.4° (W) – 3.55° (T) 31.6° (W) – 2.00° (T) 62.6° (W) – 4.05° (T), H x V x D , 4.7-94mm PTZ <ul style="list-style-type: none">• Pan/Tilt Range: Pan: 0° ~ 360°; Tilt: -5° ~ 90°• Preset Point: 255• Control Speed: Pan: 0.5° ~ 60°/s; Tilt: 0.5° ~ 60°/s• A-B Scanning: Support• Auto Cruising: Support 8 groups patrol, Max. 16 presets in group• Power on Action: Preset/Scan/Cruise• Power-off Recovery: Support• Smart Tracking: Human Detection Tracking together with patrol Smart Detection <ul style="list-style-type: none">• Digital IO Alarm: 1 pair Alarm-in/Alarm-out, normally open/normally close (for the digital alarm, you can send alarm message from ANVR or App to camera directly)• Support MicroSD: Up to 512GB. (256GB is recommended)• Motion Detection: Schedule/Detection area/Trigger Recording/Trigger Snapshot/Link Blink/Upload Alarm Centre/Trigger Audio• Intelligent Detection: Human,Vehicle, Cross Line, Enter/Leaving Area, Intrusion and Face Detection.• Target Detection Type: Human Shape, Vehicle, Non-motor vehicle, Pet, Face (32px-800px)• Trigger Action Linkage: Snapshot, Record, Relay, White LED Flash, Voice siren, Micro-SD, Email, FTP, NAS storage, Support audio alarm to warn intruders off• Simultaneous Detection: Maximum 16 targets simultaneous detection• Storage Type: Schedule/Trigger: Micro-SD, Email, FTP, NAS Multiple Language <ul style="list-style-type: none">• English, Chinese Traditional/Simplified, Russian, Deutsch, Italiano, Türkiye, Polski, Korean, Japanese, Ukrainian APP and Software Control <ul style="list-style-type: none">• Windows: Web browser, AirCam64 II• *NVR APP iOS/Android: Download "Guard Viewer" App from APP/Play Store, (can be used when camera has been added to ANVR AI.)
Camera <ul style="list-style-type: none">• Image Sensor: 1/2.8" Sony CMOS• CPU: Sigmastar• Effective Pixels: 6 Megapixels (3072(H)×2048 (V))• Exposure Shutter: Auto/Manual: 1/10s ~ 1/8000s, Max. Shutter speed adjustable• Day/Night: Auto (Active/passive/schedule)/Day/Night, switch threshold, sensitivity• Image Adjust: Brightness, Saturation, Sharpness, Contrast, Denoise (0-100%) adjustable• WDR: 100db WDR• Low Illumination: 0.01Lux• White Balance: AWB/MWB• DNR: 2D/3D DNR• Light Mode: Smart (Dual-Light) / Pure Infrared/ Pure White Light, adjustable• Light Control: Auto/Manual, Brightness level (0-100%) adjustable• Other: Day/ Night (ICR), AWB, IR-CUT• Mechanical: Waterproof IP66 Housing	
Encode <ul style="list-style-type: none">• Video Standard: H.265/H.264/MJPEG• Video Resolution: Main Stream: 25fps@6MP(3072x2048)/30fps@5MP(2592x1944)/4MP(2560x1440)/3MP(2304x1296)/1080P/720P Sub stream: 10fps@720P, 30fps@D1(704x576)/(720x480)/VGA(640x480)/QVGA(640x360)• Video Bitrates: Sub stream: 64kbps-8Mbps, Sub stream: 64kbps-2048kbps, VBR/CBR, Quality (1-9), GOP (1-128)• Image Rotation: 0 / 90 / 180 / 270 degree adjustable• Border Crop: X crop, Y crop• Image Mirror: Horizon / Vertical / Horizon & Vertical adjustable, Flip• OSD Overlay: Font size (1-4), Position, Time, Title, AM/PM, Color, User OSD, Alarm OSD• Privacy Mask: 4 areas• Region of Interest: ROI: Each stream support 8 areas• Audio Standard: G.711-u/G.711-a/AAC/PCM, AEC• Two Way Audio: Supported• Microphone: Built-in Mic• Speaker: Built-in Speaker	

* Specification will be changed without prior notice

* All trademarks, logos and brand names are the property of their respective owners.



Model	AirCam SDDL-6120XAI-20X7
<div>Power Input<ul style="list-style-type: none">Power Supply: 12V DC 3A or PoE+: 802.3at/afPower Consumption: ≤25 WEnvironment<ul style="list-style-type: none">Operating temperature: -30°C ~ +60°COperating Humidity: 10% ~ 90% (non-condensing)Standard package of Camera<ul style="list-style-type: none">Product size: Φ203.99mm (Camera housing diameter x 403.20mm (H) (Including bracket) x 292.26mm (W) (Including bracket)Package size: 29.5 x 29.5 x 48.0cm(L*W*H)Package Weight: N.W: 4.6kg G.W: 4.6kgPackage content: IP Camera/Network cable/QIG/waterproof connectorStandard carton package<ul style="list-style-type: none">Quantity: 2pcs / 1 cartonDimensions 62.5 x 31.5 x 50.5cm (L*W*H)Weight 10.0kg (G.W)Ordering Information<ul style="list-style-type: none">Model: AirLive SDDL-6120XAI-20X7Name: 6MP Autofocus Smart AI 120M Dual Light, Speed Dome PoE IP Camera</div>	

* Specification will be changed without prior notice

* All trademarks, logos and brand names are the property of their respective owners.

AirLive